

Art Barn

LOCAL SHOW – OPEN TO RESIDENTS OF PLUMAS
AND SIERRA COUNTIES ONLY.
Plumas Arts - Superintendent

GENERAL GUIDELINES FOR ALL ARTS, CRAFTS AND PHOTOGRAPHY

All Local rules, guidelines, regulations and State rules for California Fairs apply to this Department. Copies of the State Rules may be obtained at the Fair Office or at www.plumas-sierracountyfair.net.

Amateur - A person who engages in Arts or Crafts as an activity or a pastime rather than a profession.

Professional – A person who engages in an event or activity as a livelihood rather than as a hobby or has reached an advanced state of skill.

Jr. High - exhibitors in grades 7th- 9th of current year. Age and grade level upon completion of project must appear on entry form.

Sr. High - exhibitors in grades 10 - 12 of current year.

Exhibit Age Requirements - All work must be entered in the name of the artist, completed in the last TWO YEARS, and not previously exhibited at the Plumas-Sierra County Fair.

Display Only Exhibits – In addition to exhibits entered for premium awards, artists are invited to display their work in the Art Barn “Courtesy Area” subject to space availability. Two exhibits per exhibitor. Please submit entry form with dimensions of artwork for Art Barn layout purposes.

Unclaimed Exhibits - Any Art, Crafts, or Photography left over thirty (30) days will become the property of Plumas-Sierra County Fair and will be sold at the County Picnic by silent auction with proceeds benefiting the Art Barn.

Judging – Judging in the Art Barn will be based on the American System of judging. This judging process to rank exhibits against one another and award one first placing, one second, etc. To encourage high standards; the judge shall award first, second, third place, etc., according to merit. If without merit, the judge shall make no award under any circumstance. This applies whether there are one or more exhibits in class. The judge has the authority to disqualify or transfer to the correct class any exhibit that does not meet the requirements of the division or class in which it is entered.

Measurement Requirements – Measurements must be stated under description of entry on still entry form.

Photographs may be film or digital.

PHOTOGRAPHY

JR./SR. High Photography

Entries Close: Wednesday, July 11 5pm
Exhibits Received: Art Barn
Thursday, Aug. 2 Noon to 6pm
Friday, Aug. 3 Noon to 8pm
Judging: Tuesday, Aug. 7
Exhibits Released: Sunday, Aug. 12 After 10pm
Monday, Aug. 13 10am to 8pm
Entry Limit: 2 entries per exhibitor per class
Entry Fee: \$2.00 per entry-High School
No fee-Jr. High, ribbon only, Danish

Guidelines:

Photos **must comply** with the guidelines, or **will not be accepted**

- Exhibitor must have taken all photographs.
- Photos must be in a **traditional** frame or a uni-frame, with **or** without a matte.
- The frames must be **wired**, ready for hanging,
NO TAPE.
- Minimum **overall** size, **including** frame, 5" x 7".
- Maximum **overall** size, **including** frame, 20" x 24".
- Photographs that cannot be safely hung will be disqualified.
- Black & White photos may be toned.

PREMIUMS FOR HIGH SCHOOL CLASS

1st	2nd	3rd
\$5	\$3	\$2

American System of Judging

DIVISION: 001 JR HIGH B & W PRINTS
DIVISION: 002 SR HIGH B & W PRINTS
DIVISION: 003 JR HIGH COLORED PRINTS
DIVISION: 004 SR HIGH COLORED PRINTS
Class

1. Animals/Birds
2. Landscape
3. Seascape
4. News/Action/Sports
5. Youth - Our Generation
6. Plants/Flowers
7. Water/waterfalls
8. Still Life
9. Portraits, Any
10. Candid (caught unaware)
11. Plumas-Sierra County Fair 2011
12. Photo page
13. Other

**AMATEUR & PROFESSIONAL
PHOTOGRAPHY**

Entries Close: Wednesday, July 11 5pm
Exhibits Received: Art Barn
 Thursday, Aug. 2 Noon to 6pm
 Friday, Aug. 3 Noon to 8pm
Judging: Tuesday, Aug. 7
Exhibits Released: Sunday, Aug. 12 After 8pm
 Monday, Aug. 13 10am to 8pm
Entry Limit: 3 entries per exhibitor per class
Entry Fee: Professional \$4.00 per entry
 Amateur \$2.00 per entry

Guidelines:

- Photos must comply with the rules, or will not be accepted.
- Exhibitor must have taken all photographs.
- Photos must be in a frame, with or without matting. Uni-frames are acceptable.
- The frames must be wired, ready for hanging.
- Photographs that cannot be safely hung will be disqualified.
- Minimum photo size 5" x 7" before matting or framing.
- Minimum overall size, including frame, 8" x 10".
- Maximum overall size, including frame, 20" x 24", except photo essay.
- Black & White prints may be toned.
- Panoramic (3 or more photographs combined that make one scene and are in one framing) not to exceed 36" long x 12" without framing.
- Photo Essay (a series of 3 to 6 photographs that tells a story in one framing) maximum size per photo is 8"x10" without framing. Maximum overall size 48" x 60".
- Prints may be film or digital.

Amateur

PREMIUMS OFFERED PER CLASS		
1st	2nd	3rd
\$7	\$5	\$4
<i>American System of Judging</i>		

DIVISION: 005 AMATEUR B & W PRINTS
DIVISION: 006 AMATEUR COLOR PRINTS
 Class

1. Animals/Birds Wild
2. Animals/Birds Domestic
3. Architecture/Buildings
4. Restored Photos
5. Experimental/Manipulated

6. Human Interest
7. Landscape
8. News/Action/Sports
9. Plants/Flowers
10. Plumas-Sierra County Fair 2011
11. Portraits/Figure-Adults
12. Portraits/Figure-Babies/Children
13. Portraits/Figure-Group (3 or more)
14. Portraits/Figure-Wedding
15. Seascape
16. Sculpture/Still Life
17. Photo Essay
18. Panoramic
19. Aquatic
20. Ranch/Rural Life
21. Local Interest
22. Candid
23. Other

Professional

PREMIUMS OFFERED PER CLASS		
1st	2nd	3rd
\$15	\$10	\$5
<i>American System of Judging</i>		

DIVISION: 007 PRO B & W PRINTS
DIVISION: 008 PRO COLOR PRINTS
 Class

1. Animals/Birds Wild
2. Animals/Birds Domestic
3. Architecture/Buildings
4. Restored Photos
5. Experimental/Manipulated
6. Human Interest
7. Landscape
8. News/Action/Sports
9. Plants/Flowers
10. Plumas-Sierra County Fair 2011
11. Portraits/Figure-Adults
12. Portraits/Figure-Babies/Children
13. Portraits/Figure-Group (3 or more)
14. Portraits/Figure-Wedding
15. Seascape
16. Sculpture/Still Life
17. Photo Essay
18. Panoramic
19. Aquatic
20. Ranch/Rural Life
21. Local Interest
22. Candid
23. Other

ARTS & CRAFTS

CHILDREN & JUNIOR/SENIOR HIGH SCHOOL ARTS & CRAFTS

Guidelines:

- All pictures must be framed or mounted and ready for hanging, Do not use tape. Construction paper or other suitable mounting mat may be used. If pictures are not ready for hanging THEY WILL NOT BE ACCEPTED.
- Projects made from assembly kits are not allowed.
- All entries must be completed by exhibitor only.

Entries Close: Wednesday, July 11 5pm
Exhibits Received: Art Barn
 Thursday, Aug. 2 Noon to 6pm
 Friday, Aug. 3 Noon to 8pm
Judging: Tuesday, Aug. 7
Exhibits Released: Sunday, Aug. 12 After 8pm
 Monday, Aug. 13 10am to 8pm
Entry Limit: 3 entries per exhibitor per class
Entry Fee: See individual headings

Children's

No Entry Fee - Danish System of Judging

DIVISION: 009 KINDERGARTEN & UNDER
DIVISION: 010 1ST THRU 3RD GRADE
DIVISION: 011 4TH THRU 6TH GRADE
 Class:
 1. Collage
 2. Collections
 3. Crafts, Any
 4. Drawing, Any
 5. Pet Rock
 6. Historical
 7. Drawing Colored in, Any
 8. Illustrated Story
 9. Photography, Any
 10. Painting, Any
 11. CA Missions
 12. Other

Let's do it again!

**In an effort to allow more kids to participate this year, the Fair Board has decided to eliminate entry fees for all Junior Still exhibitors. Now you have no excuse to not enter something in this year's fair!
 (Does not apply to livestock or Senior high school exhibitors.)**

Junior/Senior High

High School Entry Fee \$2.00, American Judging
 Jr. High-No entry fee, ribbon only, American Judging

PREMIUMS OFFERED PER CLASS		
1st	2nd	3rd
\$5	\$3	\$2
<i>American System of Judging</i>		

DIVISION: 012 JR HIGH PAINTINGS

DIVISION: 013 SR HIGH PAINTINGS

Class

- | | |
|---------------|----------------|
| 1. Acrylics | 4. Mixed Media |
| 2. Oils | 5. Other |
| 3. Watercolor | |

DIVISION: 014 JR HIGH DRAWINGS

DIVISION: 015 SR HIGH DRAWINGS

Class

- | | |
|-------------------|----------------|
| 1. Pencil-Colored | 4. Pen and Ink |
| 2. Pencil-Regular | 5. Pastel |
| 3. Mixed Media | 6. Other |

DIVISION: 016 JR HIGH CRAFTS

DIVISION: 017 SR HIGH CRAFTS

Class

1. Decorative Painting, Any
2. Dolls, Any
3. Leather
4. Weaving-Baskets
5. Clay; sculpture/hand
6. Ceramics
7. Decoupage
8. Gift Wrapping
9. Scrapbooks
10. Other

DIVISION: 018 JR HIGH INDUSTRIAL ARTS

DIVISION: 019 SR HIGH INDUSTRIAL ARTS

Class

1. Woodworking
2. Metal Work
3. Other



DIVISION: 020 JR HIGH POETRY

DIVISION: 021 SR HIGH POETRY

All poems must be typewritten, titled, English language, & original work by exhibitor, 32-line limit. Must be framed and ready to hang.

Class

1. Any Form: Relating to Fair Theme: *"Magic of Country Living"*
2. Any Form: Any Subject
3. Cowboy Poetry

DIVISION: 022 JR HIGH COLLECTIONS

DIVISION: 023 SR HIGH COLLECTIONS

A 2' x 4' rectangle display case will be provided with a clear top sloping 3" at the front to 6" in back. To be judged on content & presentation.

Class

1. Any

**PROFESSIONAL & AMATEUR
ARTS & CRAFTS**

Entries Close: Wednesday, July 11 5pm

Exhibits Received: Art Barn

Thursday, Aug. 2 Noon to 6pm

Friday, Aug. 3 Noon to 8pm

Judging: Tuesday, Aug. 7

Exhibits Released: Sunday, Aug. 12 After 8pm

Monday, Aug. 13 10am to 8pm

Entry Limit: 3 entries per exhibitor per class

Entry Fee: Professional \$4.00 per entry
Amateur/Handicapable \$2.00 per entry

Guidelines:

All entries **must comply** with the guidelines, or they **Will Not Be Accepted**

- **Must be framed and wired for hanging.**

- Artwork that cannot be safely hung will be disqualified.

- No painting or drawing shall exceed 5'x 6', including frame.

- All paint and varnish must be dry.

Don't miss the constant ramblings of
Chipper Chat
 At www.plumas-sierracountyfair.net
 Your #1 blog of what's going on at the Fair!

Amateur Arts and Crafts

PREMIUMS OFFERED PER CLASS

1st	2nd	3rd
\$7	\$5	\$4

American System of Judging

DIVISION: 049 SCULPTURE

DIVISION: 050 OIL PAINTING

DIVISION: 051 ACRYLIC PAINTING

DIVISION: 052 WATER COLOR PAINTING

DIVISION: 053 MIXED MEDIA PAINTING

Class

1. Animal/Bird
2. Landscape - Seascape
3. Abstract/Surrealism
4. Portrait/Figure People
5. Still Life
6. Other

DIVISION: 054 DRAWINGS

Class

1. Pencil-Colored
2. Pencil-Regular
3. Mixed Media
4. Pen & Ink
5. Charcoal/Conte Crayon
6. Pastel
7. Other

DIVISION: 055 CRAFTS

Class

1. Dolls Any
2. Leather
3. Weaving
4. China Painting
5. Taxidermy
6. Collage
7. Baskets
8. Ceramics
9. Jewelry
10. Stained Glass
11. Gift Wrapping
12. Scrapbooks
13. Decorative Painting, Any
14. Other

DIVISION: 056 WOODWORKING

Class

1. Carvings
2. Furniture
3. Decorative
4. Any restored item
5. Other

DIVISION: 057 POTTERY/CLAYS

Class

1. Hand Built
2. Thrown
3. Other

DIVISION: 058 POETRY

All poems must be: Type written, titled, English Language, & original work by exhibitor, 32-line limit. Must be framed & ready for hanging.

Class

1. Any form: Relating to Fair Theme *"Magic of Country Living"*
2. Any form: Any Subject
3. Cowboy Poetry

DIVISION: 059 COLLECTIONS

A 2'x4' rectangle display case will be provided with a clear top sloping 3" at front to 6" in back. To be judged on content and presentation.

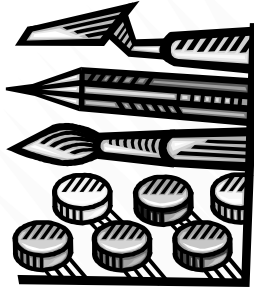
Class

- 1. Any

DIVISION: 060 METALWORKING

Class

- 1. Tools
- 2. Furniture
- 3. Decorative
- 4. Other Farm
- 5. Any Restored Item
- 6. Other



Handicapable Arts & Crafts

For the Developmentally Disabled

PREMIUMS OFFERED PER CLASS

1st	2nd	3rd
\$7	\$5	\$4

American System of Judging

DIVISION: 061 HANDICAPABLE

Class

- | | |
|---------------------|--------------------------|
| 1. Paintings, Any | 5. Ceramics, Underglazes |
| 2. Drawings, Any | 6. Ceramic, Glaze |
| 3. Crafts, Any | 7. Ceramic, Mix |
| 4. Ceramics, Stains | 8. Other |

Professional Arts & Crafts

PREMIUMS OFFERED PER CLASS

1st	2nd	3rd
\$15	\$10	\$5

American System of Judging

DIVISION: 062 OIL PAINTING

DIVISION: 063 ACRYLIC PAINTING

DIVISION: 064 WATER COLOR PAINTING

DIVISION: 065 MIXED MEDIA PAINTING

Class

- | | |
|------------------------|---------------------------|
| 1. Animal/Bird | 4. Portrait/Figure People |
| 2. Landscape/Seascape | 5. Still Life |
| 3. Abstract/Surrealism | 6. Other |

DIVISION: 066 DRAWINGS

Class

- | | |
|--------------------------|--------------|
| 1. Pencil-Colored | 5. Pen & Ink |
| 2. Pencil-regular | 6. Pastel |
| 3. Mixed Media | 7. Other |
| 4. Charcoal/Conte Crayon | |

DIVISION: 067 DECORATIVE PAINTING

Class

- | | |
|-----------|----------|
| 1. Fabric | 4. Wood |
| 2. Glass | 5. Rock |
| 3. Metal | 6. Other |

DIVISION: 068 CRAFTS

Class

- | | |
|-------------------|-------------------|
| 1. Dolls- Any | 7. Baskets |
| 2. Leather | 8. Ceramic |
| 3. Weaving | 9. Jewelry |
| 4. China Painting | 10. Stained Glass |
| 5. Taxidermy | 11. Other |
| 6. Collage | |

DIVISION: 069 WOODWORKING

Class

- | | |
|---------------|----------------------|
| 1. Carvings | 4. Any Restored Item |
| 2. Furniture | 5. Other |
| 3. Decorative | |

DIVISION: 070 POTTERY/CLAYS

Class

- 1. Hand Built
- 2. Thrown
- 3. Other

DIVISION: 071 POETRY

All poems must be: Type written, titled, English Language & original work by exhibitor. 32 line limit. Must be framed for hanging

Class

- 1. Any Form: Relating to Fair Theme
"Magic of Country Living"
- 2. Any Form: Any Subject
- 3. Cowboy Poetry

Follow the Plumas Sierra County Fair on



<http://www.facebook.com/#!/pages/Plumas-Sierra-County-Fairgrounds/323718295338>

SCOUTS

Entries Close: Wednesday, July 11 5pm
Exhibits Received: Ag Barn
Tuesday, Aug. 7 8am to Noon
Judging: Tuesday, Aug. 7 1pm
Exhibits Released: Sunday, Aug. 12 After 8pm
Monday, Aug. 13 10am to 8pm
Entry Limit: 2 entries per exhibitor per class
Entry Fee: None, ribbon only

All Local Rules and State Rules apply to this Department. State rules may be obtained at the Fair Office or at www.plumas-sierracountyfair.net. All entry forms shall bear Exhibitor's name and pack/troop number, using the Division and Class numbers as assigned. The Unit/Troop Leader of the Exhibitor must sign all entry forms and the child's parent or guardian must sign each entry form.

Open to residents of California.

Boy Scouts

DIVISION: 080 CUB SCOUTS - 7-10 years old

Class

1. Arts & Crafts
2. Leather Craft
3. Patch Collection Display
4. Pinewood Derby Cars
5. Rain Gutter Regatta Sailboat
6. Woodworking
7. Other, as approved by Leader, specify

DIVISION: 081 BOY SCOUTS - 11-18 years old

Class

1. Bead Work
2. Indian Craft
3. Leather Craft
4. Patch Collection Display
5. Woodworking
6. Other, as approved by Leader, specify



Girl Scouts

Open to Girl Scouts 5 through 17 years of age, regularly enrolled in Girl Scout Programs.

- Home Arts exhibits will be displayed in the Home Arts Building. All other exhibits will be displayed in the Junior Exhibit Building.

DIVISION: 082 BROWNIE GIRL SCOUTS

DIVISION: 083 JUNIOR GIRL SCOUTS

DIVISION: 084 CADETTE GIRL SCOUTS

DIVISION: 085 SENIOR GIRL SCOUTS

Class:

1. World of the Arts
2. World of the Out-of-Doors
3. World of People
4. World of Today and Tomorrow
5. World of Well Being
6. Any Troop project concerning one of the five worlds.

DIVISION: 086 DAISY GIRL SCOUTS

Class

1. Arts and Crafts (Specify) **No Entry Fee/No Premium/Ribbon Only**

EXHIBIT PICK-UP DAYS

You can save a trip to the fairgrounds by taking your entries to one of the scheduled community pick-up days. Mail in your entry form as usual by July 11 and then take your actual entry to one of these locations on the date shown. We'll take it to the Fair, and then bring it back to the same location afterward if you want.

Loyalton Elementary School

July 28, 9am to Noon

Chester High School

July 28, 9am to Noon

Greenville Napa Auto Parts

July 28, 9am to Noon

Portola Methodist Church

July 28, 9am to Noon

Entries will be returned to the same locations at the same times on August 18.

Dates and times are subject to change.

Check our website for any changes.

www.plumas-sierracountyfair.net