

# Art Barn

LOCAL SHOW – OPEN TO RESIDENTS OF PLUMAS  
AND SIERRA COUNTIES ONLY.  
Plumas Arts - Superintendent

## GENERAL GUIDELINES FOR ALL ARTS, CRAFTS AND PHOTOGRAPHY

All Local rules, guidelines, regulations and State rules for California Fairs apply to this Department. Copies of the State Rules may be obtained at the Fair Office or at [www.plumas-sierracountyfair.net](http://www.plumas-sierracountyfair.net).

**Amateur** - A person who engages in Arts or Crafts as an activity or a pastime rather than a profession.

**Professional** – A person who engages in an event or activity as a livelihood rather than as a hobby or has reached an advanced state of skill.

**Jr. High** - exhibitors in grades 7<sup>th</sup>- 9<sup>th</sup> of current year. Age and grade level upon completion of project must appear on entry form.

**Sr. High** – exhibitors in grades 10 – 12 of current year.

**Exhibit Age Requirements** - All work must be entered in the name of the artist, completed in the last TWO YEARS, and not previously exhibited at the Plumas-Sierra County Fair.

**Display Only Exhibits** – In addition to exhibits entered for premium awards, artists are invited to display their work in the Art Barn “Courtesy Area” subject to space availability. Two exhibits per exhibitor. Please submit entry form with dimensions of artwork for Art Barn layout purposes.

**Unclaimed Exhibits** - Any Art, Crafts, or Photography left over thirty (30) days will become the property of Plumas-Sierra County Fair and will be sold at the County Picnic by silent auction with proceeds benefiting the Art Barn.

**Judging** – Judging in the Art Barn will be based on the American System of judging. This judging process to rank exhibits against one another and award one first placing, one second, etc. To encourage high standards; the judge shall award first, second, third place, etc., according to merit. If without merit, the judge shall make no award under any circumstance. This applies whether there are one or more exhibits in class. The judge has the authority to disqualify or transfer to the correct class any exhibit that does not meet the requirements of the division or class in which it is entered.

**Measurement Requirements** – Measurements must be stated under description of entry on still entry form.

**Photographs may be film or digital.**

## PHOTOGRAPHY

### JR./SR. High Photography

**Entries Close:** Wednesday, July 14 5pm  
**Exhibits Received:** Art Barn  
Thursday, Aug. 5 Noon to 6pm  
Friday, Aug. 6 Noon to 8pm  
**Judging:** Tuesday, Aug. 10  
**Exhibits Released:** Sunday, Aug. 15 After 10pm  
Monday, Aug. 16 10am to 8pm  
**Entry Limit:** 2 entries per exhibitor per class  
**Entry Fee:** \$2.00 per entry

#### **Guidelines:**

Photos **must comply** with the guidelines, or **will not be accepted**

- Exhibitor must have taken all photographs.
- Photos must be in a **traditional** frame or a uni-frame, with **or** without a matte.
- The frames must be **wired**, ready for hanging,  
**NO TAPE.**
- Minimum **overall** size, **including** frame, 5" x 7".
- Maximum **overall** size, **including** frame, 20" x 24".
- Photographs that cannot be safely hung will be disqualified.
- Black & White photos may be toned.

#### **PREMIUMS OFFERED PER CLASS**

1st	2nd	3rd
\$5	\$3	\$2

*American System of Judging*

**DIVISION: 001 JR HIGH B & W PRINTS**  
**DIVISION: 002 SR HIGH B & W PRINTS**  
**DIVISION: 003 JR HIGH COLORED PRINTS**  
**DIVISION: 004 SR HIGH COLORED PRINTS**  
Class

1. Animals/Birds
2. Landscape
3. Seascape
4. News/Action/Sports
5. Youth - Our Generation
6. Plants/Flowers
7. Water/waterfalls
8. Still Life
9. Portraits, Any
10. Candid (caught unaware)
11. Plumas-Sierra County Fair 2009
12. Photo page
13. Other

**AMATEUR & PROFESSIONAL  
PHOTOGRAPHY**

**Entries Close:** Wednesday, July 14 5pm  
**Exhibits Received:** Art Barn  
 Thursday, Aug. 5 Noon to 6pm  
 Friday, Aug. 6 Noon to 8pm  
**Judging:** Tuesday, Aug. 10  
**Exhibits Released:** Sunday, Aug. 15 After 10pm  
 Monday, Aug. 16 10am to 8pm  
**Entry Limit:** 3 entries per exhibitor per class  
**Entry Fee:** Professional \$4.00 per entry  
 Amateur \$2.00 per entry

**Guidelines:**

- Photos must comply with the rules, or will not be accepted.
- Exhibitor must have taken all photographs.
- Photos must be in a frame, with or without matting. Uni-frames are acceptable.
- The frames must be wired, ready for hanging.
- Photographs that cannot be safely hung will be disqualified.
- Minimum photo size 5" x 7" before matting or framing.
- Minimum overall size, including frame, 8" x 10".
- Maximum overall size, including frame, 20" x 24", except photo essay.
- Black & White prints may be toned.
- Panoramic (3 or more photographs combined that make one scene and are in one framing) not to exceed 36" long x 12" without framing.
- Photo Essay (a series of 3 to 6 photographs that tells a story in one framing) maximum size per photo is 8"x10" without framing. Maximum overall size 48" x 60".

**Amateur**

<b>PREMIUMS OFFERED PER CLASS</b>		
1st	2nd	3rd
\$7	\$5	\$4
<i>American System of Judging</i>		

**DIVISION: 005 AMATEUR B & W PRINTS**  
**DIVISION: 006 AMATEUR COLOR PRINTS**  
 Class

1. Animals/Birds Wild
2. Animals/Birds Domestic
3. Architecture/Buildings
4. Restored Photos
5. Experimental/Manipulated
6. Human Interest

7. Landscape
8. News/Action/Sports
9. Plants/Flowers
10. Plumas-Sierra County Fair 2009
11. Portraits/Figure-Adults
12. Portraits/Figure-Babies/Children
13. Portraits/Figure-Group (3 or more)
14. Portraits/Figure-Wedding
15. Seascape
16. Sculpture/Still Life
17. Photo Essay
18. Panoramic
19. Aquatic
20. Ranch/Rural Life
21. Local Interest
22. Candid
23. Other

**Professional**

<b>PREMIUMS OFFERED PER CLASS</b>		
1st	2nd	3rd
\$15	\$10	\$5
<i>American System of Judging</i>		

**DIVISION: 007 PRO B & W PRINTS**  
**DIVISION: 008 PRO COLOR PRINTS**  
 Class

1. Animals / Birds
2. Architecture / Buildings
3. Restored Photos
4. Experimental / Manipulated
5. Human Interest
6. Landscape
7. Seascape
8. Sunset/Clouds
9. News/Action/Sports
10. Plants/Flowers
11. Plumas-Sierra County Fair 2009
12. Portraits/Figure-Adults
13. Portraits/Figure-Babies/Children
14. Portraits/Figure-Group (3 or more)
15. Sculpture/Still Life
16. Ranch/Rural Life
17. Portraits/Figure Wedding
18. Photo Essay (must tell a story)
19. Panoramic
20. Aquatic
21. Local Interests
22. Other

# ARTS & CRAFTS

## CHILDREN & JUNIOR/SENIOR HIGH SCHOOL ARTS & CRAFTS

### Guidelines:

- All pictures must be framed or mounted and ready for hanging, Do not use tape. Construction paper or other suitable mounting matte may be used. If pictures are not ready for hanging THEY WILL NOT BE ACCEPTED.
- Projects made from assembly kits are not allowed.
- All entries must be completed by exhibitor only.

**Entries Close:** Wednesday, July 14 5pm

**Exhibits Received:** Art Barn  
Thursday, Aug. 5 Noon to 6pm  
Friday, Aug. 6 Noon to 8pm

**Judging:** Tuesday, Aug. 10

**Exhibits Released:** Sunday, Aug. 15 After 10pm  
Monday, Aug. 16 10am to 8pm

**Entry Limit:** 3 entries per exhibitor per class

**Entry Fee:** See individual headings

### Children's

Entry Fee \$1.00

#### PREMIUMS OFFERED PER CLASS

1st	2nd	3rd
\$3	\$2	\$1

*American System of Judging*

**Participation Ribbons for all!**

**DIVISION: 009 KINDERGARTEN & UNDER**

**DIVISION: 010 1<sup>ST</sup> THRU 3<sup>RD</sup> GRADE**

**DIVISION: 011 4<sup>TH</sup> THRU 6<sup>TH</sup> GRADE**

Class:

- |                 |                            |
|-----------------|----------------------------|
| 1. Collage      | 7. Drawing Colored in, Any |
| 2. Collections  | 8. Illustrated Story       |
| 3. Crafts, Any  | 9. Photography, Any        |
| 4. Drawing, Any | 10. Painting, Any          |
| 5. Pet Rock     | 11. CA Missions            |
| 6. Historical   | 12. Other                  |

## Junior/Senior High

Entry Fee \$2.00

#### PREMIUMS OFFERED PER CLASS

1st	2nd	3rd
\$5	\$3	\$2

*American System of Judging*

**DIVISION: 012 JR HIGH PAINTINGS**

**DIVISION: 013 SR HIGH PAINTINGS**

Class

- |               |                |
|---------------|----------------|
| 1. Acrylics   | 4. Mixed Media |
| 2. Oils       | 5. Other       |
| 3. Watercolor |                |

**DIVISION: 014 JR HIGH DRAWINGS**

**DIVISION: 015 SR HIGH DRAWINGS**

Class

- |                   |                |
|-------------------|----------------|
| 1. Pencil-Colored | 4. Pen and Ink |
| 2. Pencil-Regular | 5. Pastel      |
| 3. Mixed Media    | 6. Other       |

**DIVISION: 016 JR HIGH CRAFTS**

**DIVISION: 017 SR HIGH CRAFTS**

Class

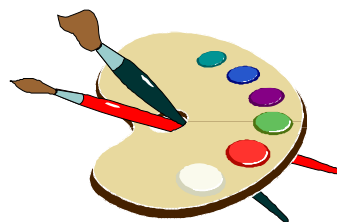
1. Decorative Painting, Any
2. Dolls, Any
3. Leather
4. Weaving-Baskets
5. Clay; sculpture/hand
6. Ceramics
7. Decoupage
8. Gift Wrapping
9. Scrapbooks
10. Other

**DIVISION: 018 JR HIGH INDUSTRIAL ARTS**

**DIVISION: 019 SR HIGH INDUSTRIAL ARTS**

Class

1. Hand Woodworking
2. Metal Work
3. Other



**DIVISION: 020 JR HIGH POETRY**

**DIVISION: 021 SR HIGH POETRY**

All poems must be typewritten, titled, English language, & original work by exhibitor, 32-line limit. Must be framed and ready to hang.

Class

1. Any Form: Relating to Fair Theme: *"Bales, Tails and Happy Trails"*
2. Any Form: Any Subject
3. Cowboy Poetry

**DIVISION: 022 JR HIGH COLLECTIONS**

**DIVISION: 023 SR HIGH COLLECTIONS**

A 2' x 4' rectangle display case will be provided with a clear top sloping 3" at the front to 6" in back. To be judged on content & presentation.

Class

1. Any

**DIVISION: 024 JR HIGH STAMPING**

**DIVISION: 025 SR HIGH STAMPING**

Class:

1. Any

**PROFESSIONAL & AMATEUR ARTS & CRAFTS**

**Entries Close:** Wednesday, July 14 5pm

**Exhibits Received:** Art Barn  
Thursday, Aug. 5 Noon to 6pm  
Friday, Aug. 6 Noon to 8pm

**Judging:** Tuesday, Aug. 10

**Exhibits Released:** Sunday, Aug. 15 After 10pm  
Monday, Aug. 16 10am to 8pm

**Entry Limit:** 3 entries per exhibitor per class

**Entry Fee:** Professional \$4.00 per entry  
Amateur/Handicapable \$2.00 per entry

**Guidelines:**

All entries **must comply** with the guidelines, or they **Will Not Be Accepted**

- **Must be framed and wired for hanging.**

- Artwork that cannot be safely hung will be disqualified.

- No painting or drawing shall exceed 5'x 6', including frame.

- All paint and varnish must be dry.

Don't miss the constant ramblings of  
**Chipper Chat**  
 At [www.plumas-sierracountyfair.net](http://www.plumas-sierracountyfair.net)  
 Your #1 blog of what's going on at the Fair!

**Amateur Arts and Crafts**

**PREMIUMS OFFERED PER CLASS**

1st	2nd	3rd
\$7	\$5	\$4

*American System of Judging*

**DIVISION: 050 OIL PAINTING**

**DIVISION: 051 ACRYLIC PAINTING**

**DIVISION: 052 WATER COLOR PAINTING**

**DIVISION: 053 MIXED MEDIA PAINTING**

Class

1. Animal/Bird
2. Landscape - Seascape
3. Abstract/Surrealism
4. Portrait/Figure People
5. Still Life
6. Other

**DIVISION: 054 DRAWINGS**

Class

1. Pencil-Colored
2. Pencil-Regular
3. Mixed Media
4. Pen & Ink
5. Charcoal/Conte Crayon
6. Pastel
7. Other

**DIVISION: 055 CRAFTS**

Class

1. Dolls Any
2. Leather
3. Weaving
4. China Painting
5. Taxidermy
6. Collage
7. Baskets
8. Ceramics
9. Jewelry
10. Stained Glass
11. Gift Wrapping
12. Scrapbooks
13. Decorative Painting, Any
14. Other

**DIVISION: 056 WOODWORKING**

Class

1. Carvings
2. Furniture
3. Decorative
4. Other

**DIVISION: 057 POTTERY/CLAYS**

Class

1. Hand Built
2. Thrown
3. Other

**DIVISION: 058 POETRY**

All poems must be: Type written, titled, English Language, & original work by exhibitor, 32-line limit. Must be framed & ready for hanging.

Class

1. Any form: Relating to Fair Theme: *"Bales, Tails and Happy Trails"*
2. Any form: Any Subject
3. Cowboy Poetry

**DIVISION: 059 COLLECTIONS**

A 2'x4' rectangle display case will be provided with a clear top sloping 3" at front to 6" in back. To be judged on content and presentation.

Class

- 1. Any

**DIVISION: 060 STAMPING**

Class

- 1. Any

**Handicapable Arts & Crafts**

*For the Developmentally Disabled*

**PREMIUMS OFFERED PER CLASS**

1st	2nd	3rd
\$7	\$5	\$4

*American System of Judging*

**DIVISION: 061 HANDICAPABLE**

Class

- 1. Paintings, Any
- 2. Drawings, Any
- 3. Crafts, Any
- 4. Ceramics, Stains
- 5. Ceramics, Underglazes
- 6. Ceramic, Glaze
- 7. Ceramic, Mix
- 8. Other

**Professional Arts & Crafts**

**PREMIUMS OFFERED PER CLASS**

1st	2nd	3rd
\$15	\$10	\$5

*American System of Judging*

**DIVISION: 062 OIL PAINTING**

**DIVISION: 063 ACRYLIC PAINTING**

**DIVISION: 064 WATER COLOR PAINTING**

**DIVISION: 065 MIXED MEDIA PAINTING**

Class

- 1. Animal/Bird
- 2. Landscape/Seascape
- 3. Abstract/Surrealism
- 4. Portrait/Figure People
- 5. Still Life
- 6. Other

**DIVISION: 066 DRAWINGS**

Class

- 1. Pencil-Colored
- 2. Pencil-regular
- 3. Mixed Media
- 4. Charcoal/Conte Crayon
- 5. Pen & Ink
- 6. Pastel
- 7. Other

**DIVISION: 067 DECORATIVE PAINTING**

Class

- 1. Fabric
- 2. Glass
- 3. Metal
- 4. Wood
- 5. Rock
- 6. Other

**DIVISION: 068 CRAFTS**

Class

- 1. Dolls- Any
- 2. Leather
- 3. Weaving
- 4. China Painting
- 5. Taxidermy
- 6. Collage
- 7. Baskets
- 8. Ceramic
- 9. Jewelry
- 10. Stained Glass
- 11. Other

**DIVISION: 069 WOODWORKING**

Class

- 1. Carvings
- 2. Furniture
- 3. Decorative
- 4. Other

**DIVISION: 070 POTTERY/CLAYS**

Class

- 1. Hand Built
- 2. Thrown
- 3. Other

**DIVISION: 071 POETRY**

All poems must be: Type written, titled, English Language & original work by exhibitor. 32 line limit. Must be framed for hanging

Class

- 1. Any Form: Relating to Fair Theme  
*"Bales, Tails and Happy Trails "*
- 2. Any Form: Any Subject
- 3. Cowboy Poetry

Have you made, grown or raised something this year?

Please consider entering it in the Fair. Your neighbors would love to see what you've done and the Fair is the real showcase of what and who we are in Plumas and Sierra Counties. Admit it, you would so love to get a blue ribbon.

## SCOUTS

**Entries Close:** Wednesday, July 14 5pm  
**Exhibits Received:** Ag Barn  
 Thursday, Aug. 5 Noon to 6pm  
 Friday, Aug. 6 Noon to 8pm  
**Judging:** Tuesday, Aug. 10 10am  
**Exhibits Released:** Sunday, Aug. 15 After 10pm  
 Monday, Aug. 16 10am to 8pm  
**Entry Limit:** 2 entries per exhibitor per class  
**Entry Fee:** \$2.00 per entry

All Local Rules and State Rules apply to this Department. State rules may be obtained at the Fair Office or at [www.plumas-sierracountyfair.net](http://www.plumas-sierracountyfair.net). All entry forms shall bear Exhibitor's name and pack/troop number, using the Division and Class numbers as assigned. The Unit/Troop Leader of the Exhibitor must sign all entry forms and the child's parent or guardian must sign each entry form.

Open to residents of California.

<b>PREMIUMS OFFERED PER CLASS</b>		
1st	2nd	3rd
\$5	\$3	\$2
<i>American System of Judging</i>		

### Boy Scouts

**DIVISION: 080 CUB SCOUTS - 7-10 years old**

Class

1. Arts & Crafts
2. Leather Craft
3. Patch Collection Display
4. Pinewood Derby Cars
5. Rain Gutter Regatta Sailboat
6. Woodworking
7. Other, as approved by Leader, specify

**DIVISION: 081 BOY SCOUTS - 11-18 years old**

Class

1. Bead Work
2. Indian Craft
3. Leather Craft
4. Patch Collection Display
5. Woodworking
6. Other, as approved by Leader, specify

## Girl Scouts

Open to Girl Scouts 5 through 17 years of age, regularly enrolled in Girl Scout Programs.

- Home Arts exhibits will be displayed in the Home Arts Building. All other exhibits will be displayed in the Junior Exhibit Building.

**DIVISION: 082 BROWNIE GIRL SCOUTS**

**DIVISION: 083 JUNIOR GIRL SCOUTS**

**DIVISION: 084 CADETTE GIRL SCOUTS**

**DIVISION: 085 SENIOR GIRL SCOUTS**

Class:

1. World of the Arts
2. World of the Out-of-Doors
3. World of People
4. World of Today and Tomorrow
5. World of Well Being
6. Any Troop project concerning one of the five worlds.

**DIVISION: 086 DAISY GIRL SCOUTS**

Class

1. Arts and Crafts (Specify) **No Entry Fee/No Premium/Ribbon Only**

## **EXHIBIT PICK-UP DAYS**

You can save a trip to the fairgrounds by taking your entries to one of the scheduled community pick-up days. Mail in your entry form as usual by July 14 and then take your actual entry to one of these locations on the date shown. We'll take it to the Fair, and then bring it back to the same location afterward if you want.

**Loyalton Elementary School**

July 31, 9am to Noon

**Chester High School**

July 31, 9am to Noon

**Taylorville Mineral Building**

July 31, 9am to Noon

**Portola Methodist Church**

July 31, 9am to Noon

Entries will be returned to the same locations at the same times on August 21.

Check our website for any changes.  
[www.plumas-sierracountyfair.net](http://www.plumas-sierracountyfair.net)